








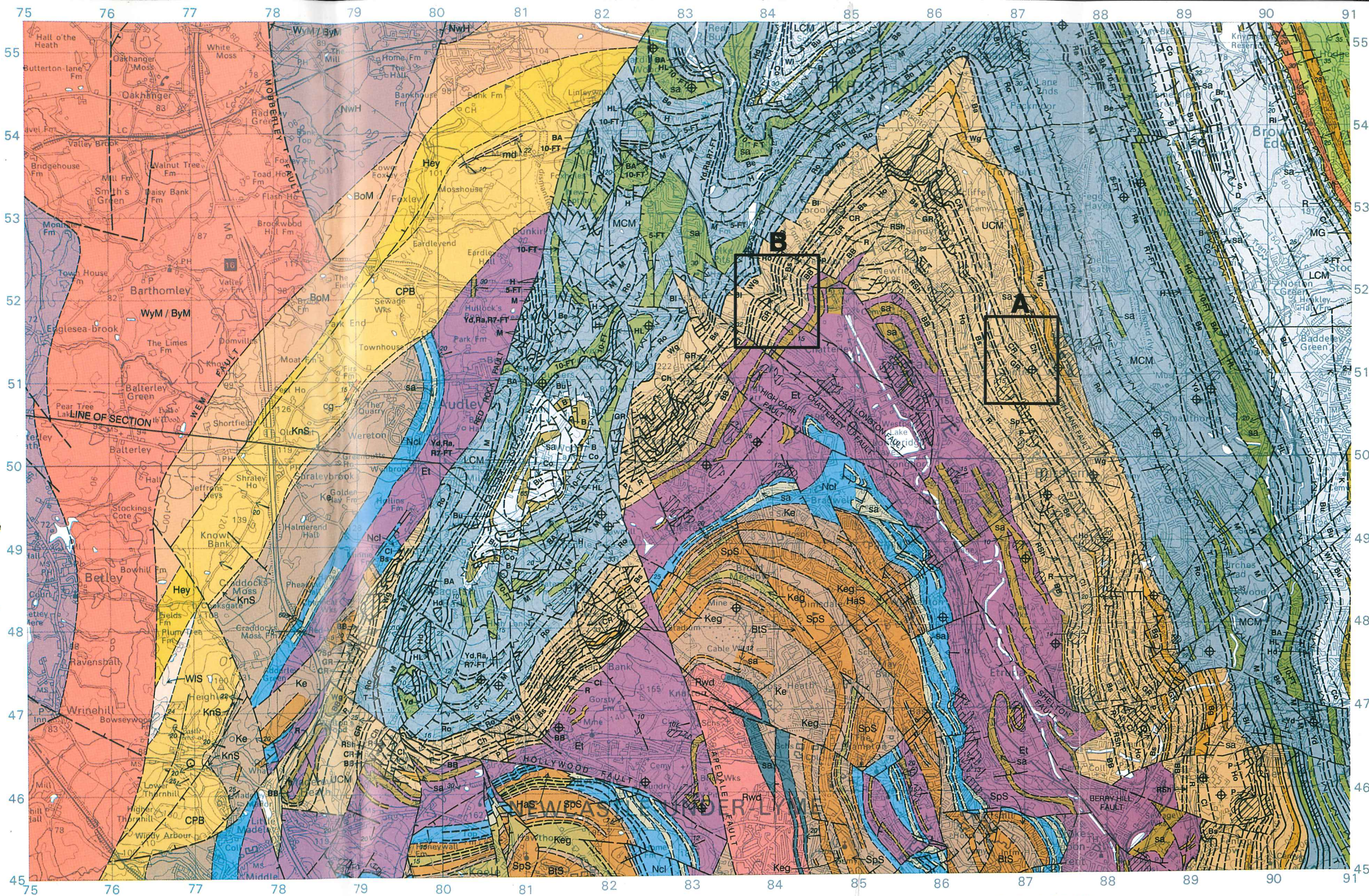


**WELSH JOINT EDUCATION  
COMMITTEE**  
454/01-A  
**ADVANCED GEOLOGY GL4**  
JUNE 2004  
Extract from  
**STOKE-ON-TRENT**  
(Solid Geology)  
1:50 000

**KEY TO GEOLOGICAL SYMBOLS  
AND COLOURS**

-  Backfilled excavation
  -  Horizontal strata
  -  Inclined strata, dip in degrees
  -  Geological boundary, Solid
  -  Coal-crop
  -  Fault at surface, crossmark indicates downthrow side
  - Broken lines are inferred
  -  Borehole
  -  Mine shaft
  -  Mine shaft, abandoned
- Only selected boreholes  
and shafts are shown

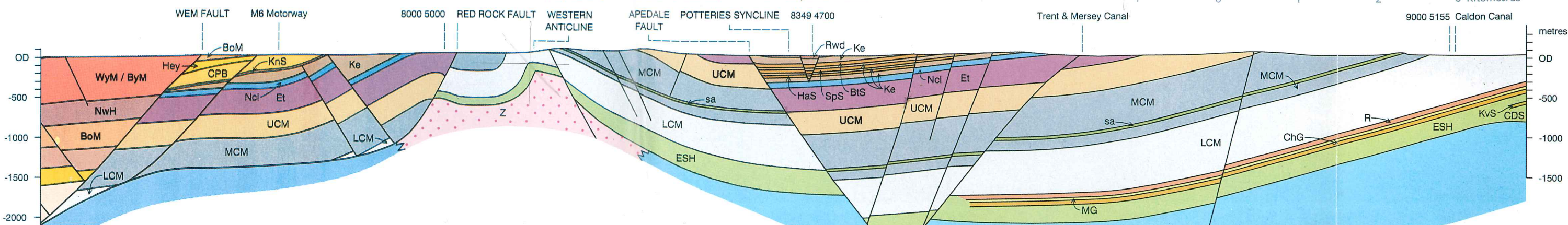
Reproduced by permission  
of the  
**British Geological Survey**  
© NERC  
All rights reserved  
(IPR/49-17C)



**CROSS SECTION SHOWING THE GENERAL RELATIONS OF THE ROCKS ALONG THE LINE DRAWN ON THE MAP**

Horizontal and vertical scales 1:50 000 Drift deposits omitted

Scale 1:50 000  
1 2 3 4 0 1 2 3 Miles  
1 2 3 4 0 1 2 3 Kilometres



# Generalised GEOLOGICAL COLUMN

Scale 1:11000  
(1cm to 110m)

